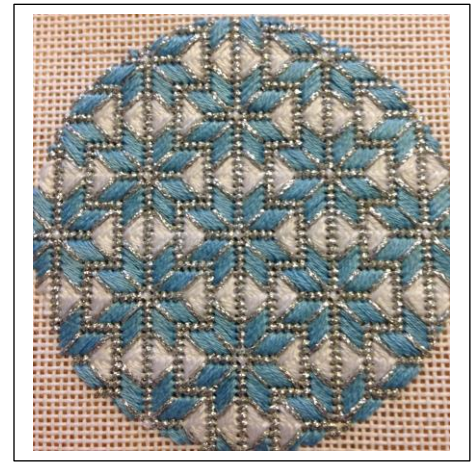


Colonial Needle Presents

Son of a Stitch - SOS1014

Stitch and Thread Suggestions

By
Cynthia D. Thomas



I used one skein, card or spool unless indicated otherwise.

Colonial Needle/Presencia

Mouline

0001 – White

3312 – Medium Baby Blue

Kreinik Manufacturing Co.

#12 Braid

001HL – Silver High Luster

Sundance Designs

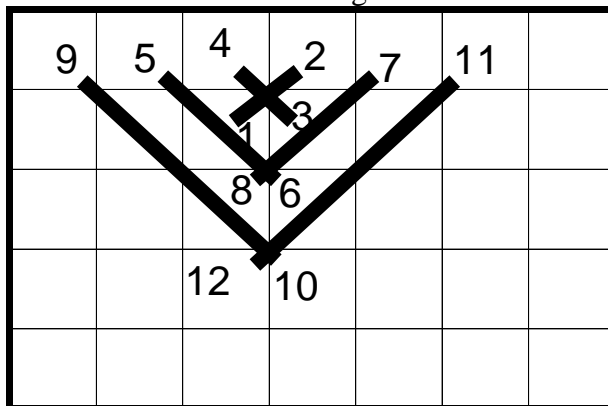
Beads 14/0

284 - Pearl

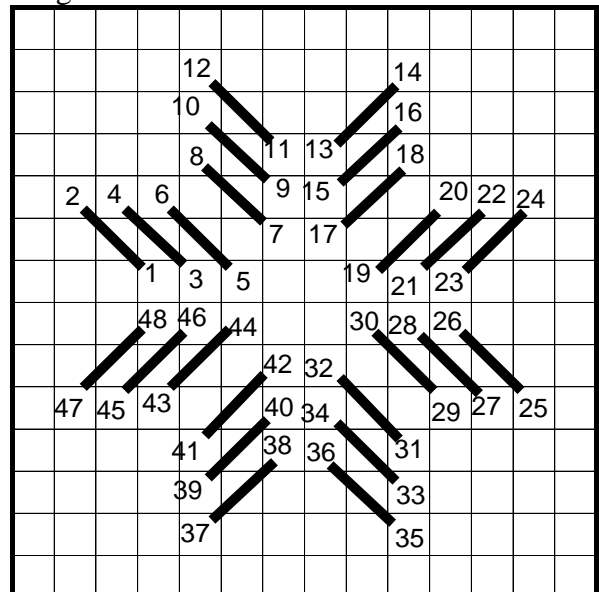
Miscellaneous

Gutermann Invisible thread or beading thread to match

White Triangles: Presencia 0001 – 3 ply – Fern. Note: I found this easier to work if I turned my canvas $\frac{1}{4}$ turn and worked all the fern stitches pointing down, then turned by canvas 180 degrees the other way and worked the rest of the triangles.



Stars: Presencia Mouline 3312 – 4 ply – Diagonal lines.



Fill in the silver line in the star and the lines between the stars and triangles with slanted stitches using Kreinik #12 001HL – 1 strand.

Vertical and horizontal silver lines – Kreinik #12 001HL – 1 strand – Continental.

White dot in center of star - attach Sundance Bead 14/0 284 using bead on intersection.

